



COUNTERFORM

CONCRETE COUNTERTOP SOLUTIONS



PRODUCT CATALOG

Summer 2020

6th Photo Contest

Below are some of our favorite customer submitted photos from our 6th Photo Contest.

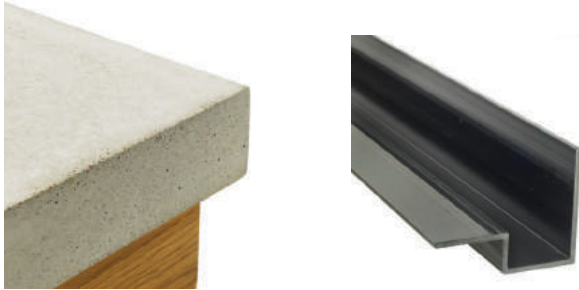
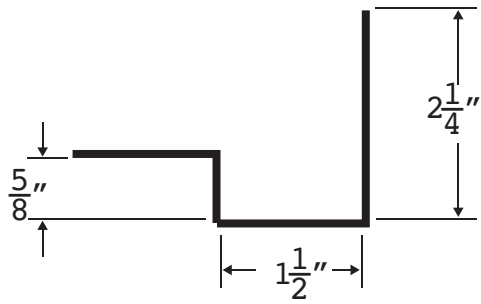




Countertop Forms	Pages 2-4	Tools	Pages 19-22
Square Edge	2	Foam Roller Bundle	19
Full Bullnose	2	Stainless Steel Finishing Trowels	19
Half Bullnose	2	Chrome Trowel	19
Quarter Bullnose	2	Lexan Float	19
Fancy Edge	3	Magnesium Float	20
Double Fancy	3	Margin Trowel	20
Ogee Edge	3	Z Counter-Screed 28"	20
Modern Edge	3	Z Island Screed 40"	20
Euro Form Square	4	Applicator Pads	21
Sink Form	4	Vibra-Blade	21
Commercial Square	4	Wet Polisher	21
Bendable Square	4	Backer Pad	21
		Single Paddle Mixer	22
		Double Paddle Mixer	22
Accessories	Pages 5-6	Floating Countertop Brackets	Page 23
Sample Kit	5	Floating Bracket V2	23
Edge Expert	5	Floating Bracket V6	23
Construction Screws	5		
Faucet Knockouts	5	Tileforms	Page 24
Fiberglass Mesh	6	Subway Tileform	24
Z Clips	6	Pencil Tileform	24
Mounting Tape	6	Chair Rail Tileform	24
Cement Products	Pages 7-8	Abrasives	Pages 25-26
Z Liqui-Crete	7	Gem Pad	25
Z Counter-Pack	7	Diamond-Discs	25
White Countertop Mix	8	Dry Polishing Pads	25
Z Counter-Patch	8	Diamond Polishing Pads	25
Micro-Topping & Bonder	8	Wet Sand Paper	26
		Hand Sanding Mouse	26
		Z Grit-Discs	26
Stains & Integral Pigments	Pages 9-13	Form Liners & Texture Mats	Pages 27-28
Z Aqua-Tint	9	Stone Form Liner (thin)	27
Z Aqua-Stain UV	9	Slate Form Liner (thin)	27
Color-Pack	9	Travertine Form Liner	27
Z Terra-Tint	9	Rock Face Form Liner	27
Z Aqua-Stain UV Color Chart	10	Z Release	27
Z Aqua-Tint Color Chart	11	Heavy Chiseled Slate	28
Z Terra-Tint Color Chart	12	Wood Grain Form Liner	28
Color-Pack Color Chart	13	Stone Texture Mat	28
		Slate Texture Mat	28
		Woodgrain Texture Mat	28
Sealers & Epoxy System	Pages 14-17	Sinks & Faucets	Page 29
Z SiAcryl 14	14		
Z Counter-Shine	14		
Aqua-Thane M35	14		
Aqua-Thane G40	14		
Z Aqua-Poxy	15		
Ultra Z Poxy	15		
Solid Color Epoxy Pigment	15		
Metallic Powders	15		
Epoxy Pigment Color Chart	16		
Metallic Powder Color Chart	17		
Epoxy Tools	Page 18		
Epoxy Tool Bundle	18		
14" Squeegee Trowel	18		
5 qt. Mixing Container	18		
Jiffy Mixer	18		



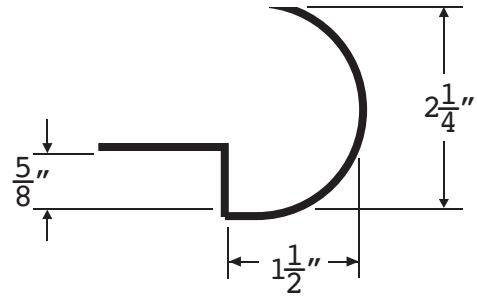
SQUARE EDGE



SE-001 Packages include 8 - 8' pieces of square edge profile and 6 - 8' pieces of backwall form.

SE-002 Packages include 4 - 8' pieces of square edge profile and 3 - 8' pieces of backwall form.

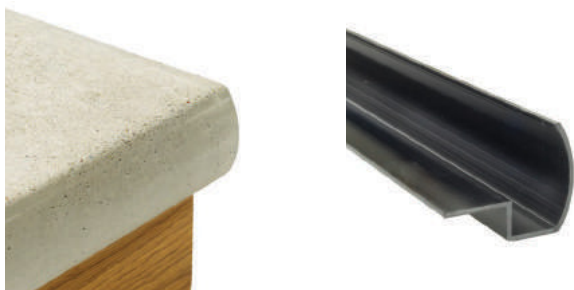
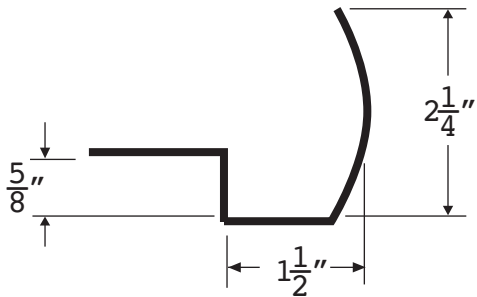
FULL BULLNOSE



FB-001 Packages include 8 - 8' pieces of full bullnose profile and 6 - 8' pieces of backwall form.

FB-002 Packages include 4 - 8' pieces of full bullnose profile and 3 - 8' pieces of backwall form.

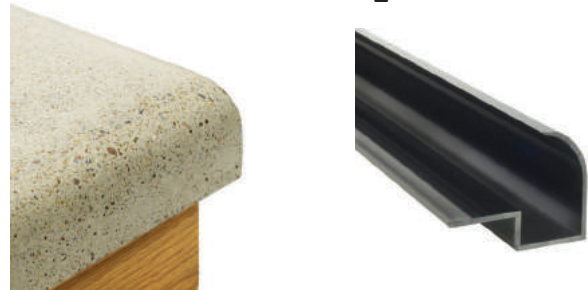
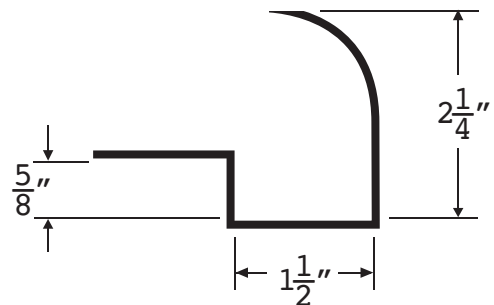
HALF BULLNOSE



HB-001 Packages include 8 - 8' pieces of half bullnose profile and 6 - 8' pieces of backwall form.

HB-002 Packages include 4 - 8' pieces of half bullnose profile and 3 - 8' pieces of backwall form.

QUARTER BULLNOSE

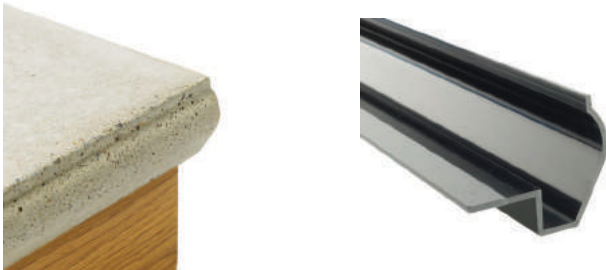
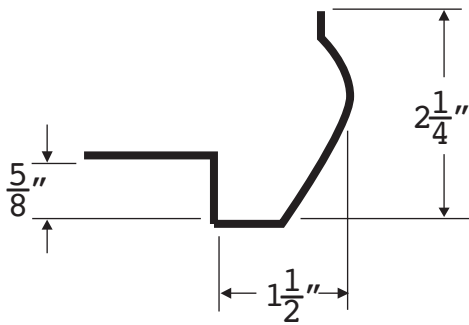


QB-001 Packages include 8 - 8' pieces of quarter bullnose profile and 6 - 8' pieces of backwall form.

QB-002 Packages include 4 - 8' pieces of quarter bullnose profile and 3 - 8' pieces of backwall form.



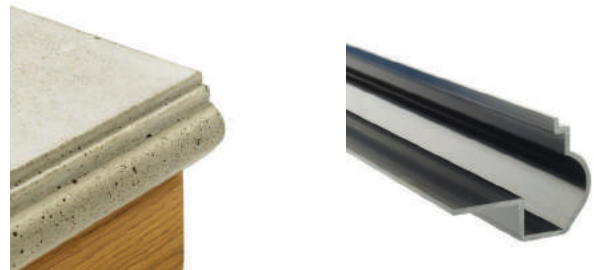
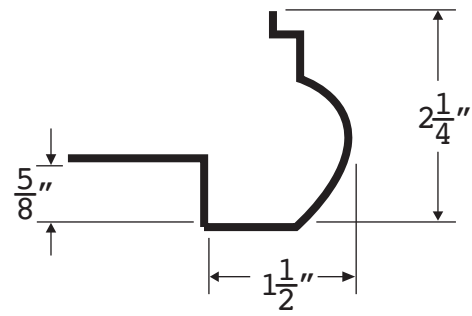
FANCY EDGE



FE-001 Packages include 8 - 8' pieces of fancy edge profile and 6 - 8' pieces of backwall form.

FE-002 Packages include 4 - 8' pieces of fancy edge profile and 3 - 8' pieces of backwall form.

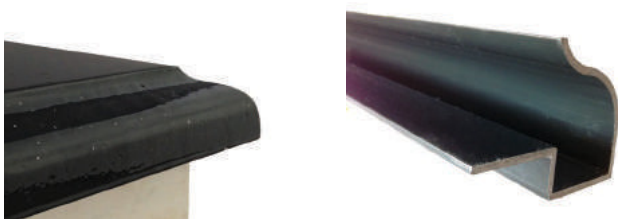
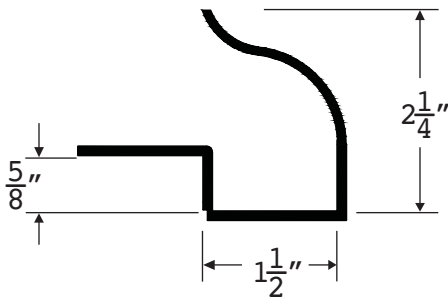
DOUBLE FANCY



DF-001 Packages include 8 - 8' pieces of double fancy profile and 6 - 8' pieces of backwall form.

DF-002 Packages include 4 - 8' pieces of double fancy profile and 3 - 8' pieces of backwall form.

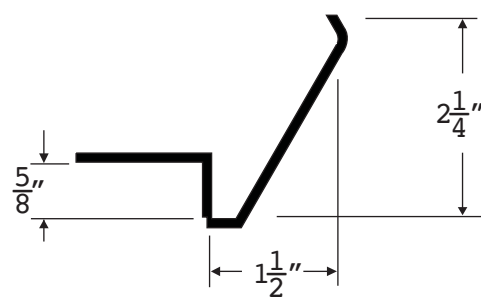
OGEE



OG-001 Packages include 8 - 8' pieces of ogee profile and 6 - 8' pieces of backwall form.

OG-002 Packages include 4 - 8' pieces of ogee profile and 3 - 8' pieces of backwall form.

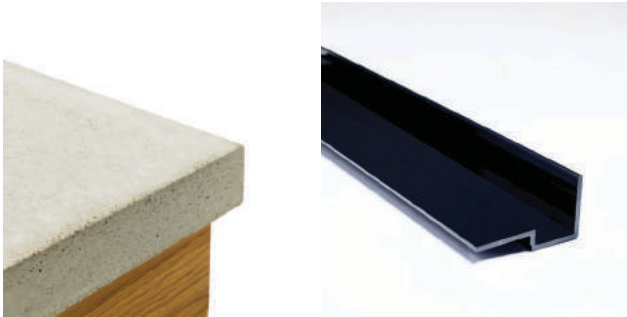
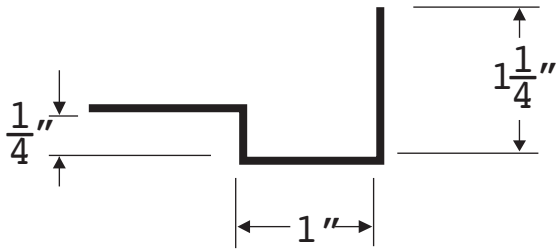
MODERN EDGE



ME-001 Packages include 8 - 8' pieces of modern edge profile and 6 - 8' pieces of backwall form.

ME-002 Packages include 4 - 8' pieces of modern edge profile and 3 - 8' pieces of backwall form.

EUROFORM SQUARE



ESE-001 Packages include 8 - 8' pieces of EuroForm Square and 6 - 8' pieces of backwall form.

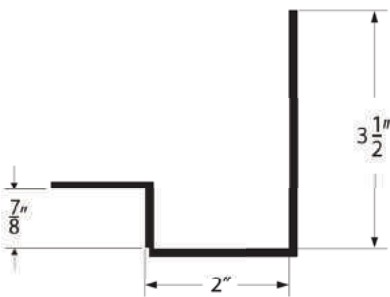
ESE-002 Packages include 4 - 8' pieces of EuroForm Square and 3 - 8' pieces of backwall form.

SINK FORM



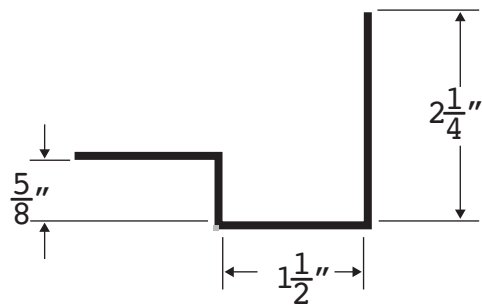
SF-001 Single 8' self-adhering flexible sink form. Will conform to most undermount sinks. May have to be notched for double bowl sink. The sink must have vertical walls.

COMMERCIAL SQUARE



SEC-003 Packages includes 8 - 8' pieces of commercial square edge profile form (no backwall form included).

BENDABLE SQUARE FORM



SEB-001 Single factory cut square edge form. The relief cuts allow the form to bend as tight as a 6" radius.



SAMPLE KIT



SM-001 Includes a single 2.5" piece of each of the 9 edge profiles and one 2.5" piece of the backwall form.

Includes: Square, Bullnose, Half Bullnose, Quarter Bullnose, Fancy, Double Fancy, Ogee, Modern, Euro and a backwall.

CONSTRUCTION SCREWS



CSC-058 and **CSC-038** #10 panhead screws. Contains 200 pcs per box. These screws have a serrated thread, multi-head drive and are very durable for heavy duty use. Holds exceptionally well in cement board. Use 5/8" screw for standard forms and Z Clips. Use the 3/8" screw for the EuroForms and Euro Clips.

Z EDGE EXPERT SET



EE-001 Includes inside and outside corner cutting guides. Z Edge-Expert™ holds all edge profiles firmly in the correct position while mitering. (Will not work with Commercial or Euro forms)

FAUCET KNOCKOUT

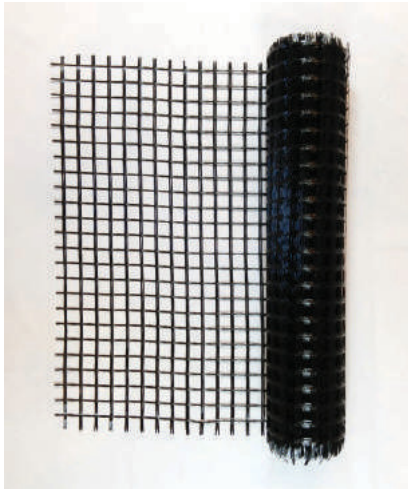


FK-001 Reusable silicone faucet knockouts. Each will create a 1-3/8" hole through the surface of the countertop and 2-1/2" pocket to attach hardware. This will accept most faucets and spouts. (Sold individually)



EFK-001 One reusable silicone faucet knockout that will create a 1-1/4" hole which will work with most standard faucets. It is meant to be used with our thinner EuroForm ONLY and 1/4" substrate.

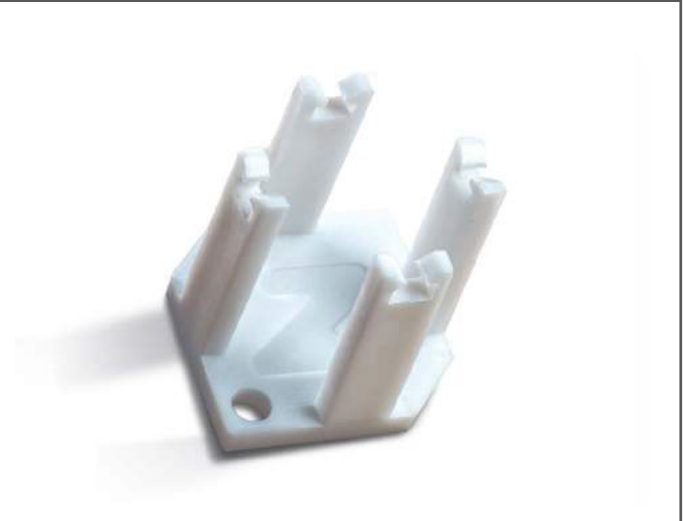
FG50 FIBERGLASS MESH



Coverage - 100 sq. ft.

FG-050 An alkali resistant fiberglass mesh for reinforcing concrete products. When used in conjunction with Z Clips and Z Liqui-Crete, it is the perfect reinforcement for cast-in-place concrete countertops. Sold on 50' long by 2' wide roll - perfect for standard base cabinets.

Z CLIPS



Coverage - approx. 33 sq. ft. per box

100 pcs per box. Used to hold FG50 alkali resistant fiberglass reinforcing securely at the appropriate height for cast-in-place concrete countertops using Z Counterforms. They should be fastened with a #10 x 5/8" panhead screw. Available in two different sizes.

ZC-002 Standard height used for all 2-1/4" edge forms. Holds mesh 1" high.

EZC-001 Euro clip used for our EuroForm Square Edge. Holds mesh 1/2" high.

POLYESTER MOUNTING TAPE



PMT-125 Roll is 1.25" wide by 104' long. Can be used for Sink Form or Pre-Cast Forms. Provides superior holding power to hold sink form firmly in place or can also be used on our Pre-Cast Form to attach it to the pouring surface. This tape has a polyester backing making it paper thin.





Z LIQUI-CRETE



Coverage - 3.9 sq. ft. @ 1-5/8" (standard Z Counterform) • 2.4 sq. ft. @ 2-5/8" (Commerical Z Counterform) • 3.1 sq. ft. @ 2" • 0.53 cu. ft.

LC-001 (single) & LC-006 (6 pack) Z Liqui-Crete™ contains a proprietary blend of specially formulated additives and ultra fine acrylic fibers that will transform a 60 lb. bag of standard concrete sand mix into a high strength, flowable mix that easily pours through the 1"x1" FG50 fiberglass mesh grid (page 6). The mix is easily troweled smooth and yields a high strength fiber reinforced countertop.

Z COUNTER-PACK



Coverage -3.75 sq. ft. @ 1-5/8" (standard Z Counterform) • 2.3 sq. ft. @ 2-5/8" (Commerical Z Counterform) • 3 sq. ft. @ 2" • 0.51 cu. ft.

CP-001 (single) & CP-006 (6 pack) Z Counter-Pack conversion kit is an admixture for converting a standard 60 lb bag of concrete mix into a high performance, easy to finish concrete countertop mix. Each Z Counter-Pack provides a consistent blend of cements and other proprietary materials which will produce significantly higher strength and reduced set times over a standard mix. Ideal for use with either precast or cast-in-place applications.

Z LIQUI-CRETE SYSTEM



Designed specifically for cast-in-place concrete countertops, the system uses a supported fiberglass mesh grid and a high strength concrete additive to reduce cracking and troweling difficulties. The Z Liqui-Crete admix is combined with a 60lb bag of standard concrete sand mix to create a highly flowable, user-friendly mix that will easily pour through the 1"x1" fiberglass mesh grid.

To install, users screw down the patented Z Clips into the cement board substrate, attach the fiberglass mesh to the Z Clips, and pour the Z Liqui-Crete concrete mix into the mold. The flowable Liqui-Crete fills the forms effectively and is easy to trowel smooth, creating a lasting, quality countertop. The FG50 fiberglass mesh and Z Clips also work very well with our proprietary White Countertop Mix (page 9).



WHITE COUNTERTOP MIX



Coverage - 0.43 cubic ft. per bag • 3 sq. ft. @ 1-5/8" (standard Z Counterform) • 1.9 sq. ft. @ 2-5/8" (Commerical Z Counterform) • 5.1 sq. ft. @ 1" (Euro Z Counterform) • 2.5 sq. ft. @ 2"

WCM-002 Z Counterform Countertop Mix is a pre-blended, all in one, high strength castable concrete mix designed for the creation of concrete countertops. It offers the very best blend of white sand and marble aggregates, white Portland cement and proprietary admixtures to ensure no curling, shrinking or deformation. The use of a specialized acrylic fiber network and the high flexural strength greatly limits the chance of cracking. This highly flowable, near self-leveling mix makes Z Counterform Countertop Mix the perfect choice for both your precast and cast-in-place designs and can be cast as thin as 1" for countertop applications.

- Works well with FG50 Mesh and Z Clips (page 6).
- Non intrusive fiber system for improved flexural strength.
- Impressive 9700 psi @ 28 days.
- White cement and aggregates (sand and crushed marble).
- Quick cure allows for grinding and polishing 24 hrs later.
- Works with all stains, integral colors and hardeners.
- Mixes, pours and flows with almost no effort to reduce honeycomb in edge.
- 50 lb bags.

Z COUNTER-PATCH



CH-001 Z Counter-Patch™ is a specially formulated cement patch mix. Fine and fortified, Z Counter-Patch is the quickest and easiest way to fill the small holes that occasionally appear in your countertop edges. It dries quickly and can be easily colored to match your countertop surface.

Available in Gray and White

MICROTOPPING & BONDER

Canvas Microtopping

Coverage - approximately 90-100 sq. ft. at 1/16" thick or 50 sq. ft. at 1/8" thick.

MT-001 Concrete Canvas Microtopping is an easy to use, trowelable style microtopping mix used for resurfacing existing concrete. The new surface is ready for staining and sealing providing a brand new "concrete" countertop. Trowelable style allows finisher to mimic the look of freshly troweled concrete.

- All in one mix design. Just add water.
- Quick turnaround - stain and seal the following day.
- Available in white and standard gray colors.
- Trowel-Slick recommended for applying Microtopping

Tru Impressions Flexy-Bo Bonder

Coverage - Dilute 1:1 with water to make 2 qts. which will cover approx. 100 sq. ft.

BA-001 Tru Impressions Flexy-Bo is a concentrated re-emulsifiable co-polymer solution designed as a primer for Concrete Rescue Microtopping overlays.





Z AQUA-TINT



Z Aqua-Tint™ is a water soluble concrete dye formulated for use on concrete countertops. It can be applied to polished, troweled or textured concrete. Z Aqua-Tint will duplicate the performance of solvent based dyes while eliminating the dangers of flammable solvents. When cured, Z Aqua-Tint exhibits the same long lasting beauty as traditional dyes. Z Aqua-Tint comes in a variety of colors that can be mixed to create many more. Not for outdoor use. 100% countertop safe.

AT-001 Coverage - approx. 75-100 sq. ft. per qt bottle.

AT-004 Coverage - approx. 10 sq. ft. per 4oz. bottle.

Z AQUA-STAIN UV



Z Aqua-Stain UV™ is a versatile and long lasting water based concrete stain. It is a safe, non-toxic product used to color concrete surfaces. It is a great alternative to common acid stains. It contains no hazardous components, yet can produce the mottled, variegated look associated with acid stains used in decorative concrete. It is UV stable and will not fade from exposure to direct sunlight. It can be used alone, mixed, blended or layered for any number of natural looking effects.

AS-001 Coverage - approx. 50 - 75 sq. ft. per qt bottle.

AS-004 Coverage - approx. 10 sq. ft. per 4oz. bottle.

COLOR-PACK



ICP-001 Pre-weighed integral color meant to be combined 1 Color-Pack per 50 lb bags of our White Countertop Mix. Available in 3 colors with more options on the way.

Bright White: Increases the “whiteness” of the white countertop mix.

Gunmetal: Will give a dark gray color

Black: Full dose of carbon black for the darkest obtainable color through integral pigment. NOT safe for outdoor use

Z TERRA-TINT

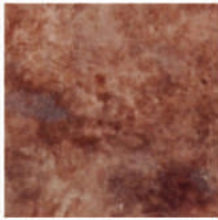


TT-001 Contains 3 lbs. of powdered color and a 2 oz. scooper. Z Terra-Tint™ is an integral pigment additive for concrete mixes. This easy to use dry powder admixture will impregnate the concrete with a uniform, fade-resistant color.

*View color charts on the following 4 pages



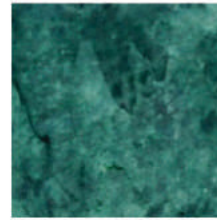
Z AQUA-STAIN UV



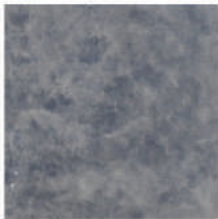
Autumn



Black



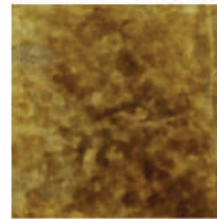
Billiard



Bluestone



Boulder



Buckskin



Champagne



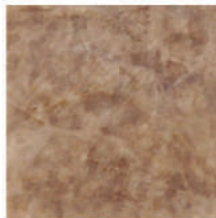
Copper



Dove



Espresso



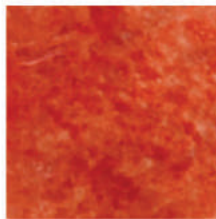
Fawn



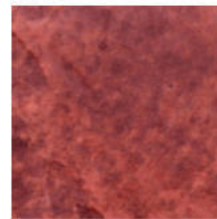
Hazlenut



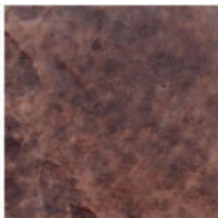
Olive



Red



Rust



Sequoia



Tobacco

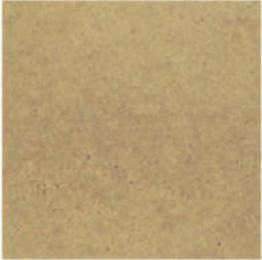


Whitewash

Please note that color will vary depending on concrete mix used. These swatches were created using a standard 60lb light gray mix. It is important to always test on a sample piece.



Z AQUA-TINT



Amber



Azure



Cola



Denim



Earth



Ebony



Garden



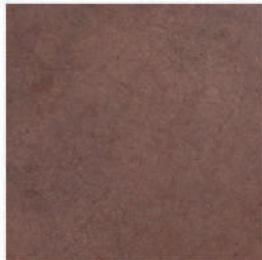
Grass



Mojave



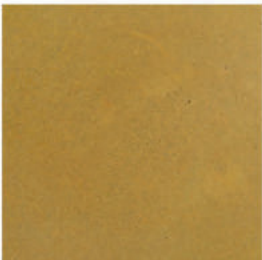
Pacific



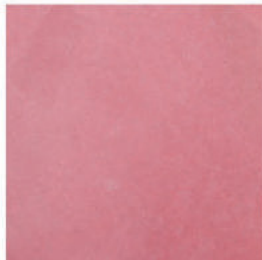
Sienna



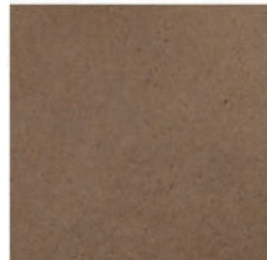
Snow



Sunglow



Tamale



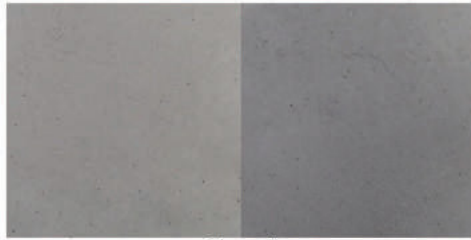
Wheat

Please note that color will vary depending on concrete mix used. These swatches were created using a standard 60lb light gray mix. It is important to always test on a sample piece.



Z TERRA-TINT

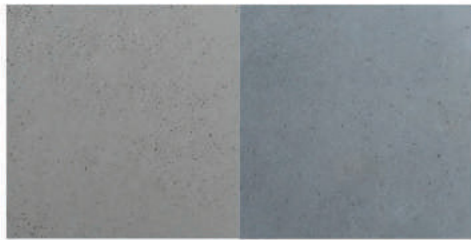
Color on left - 2 (2 oz.) scoop/60 lbs | Color on right 4 (2 oz.) scoops/60 lbs



Charcoal



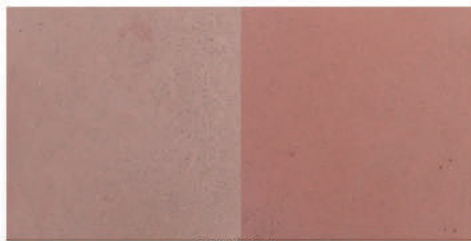
Burnt Sienna



Blizzard



Shadow



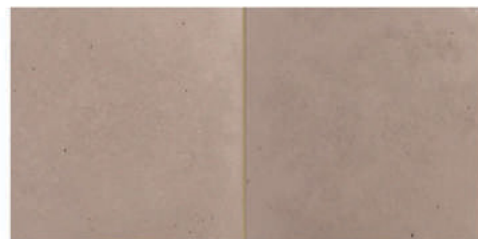
Brick Red



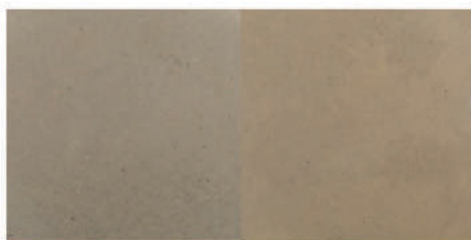
Chestnut



Olive



Brown



Sand



Golden Rod



Almond



Fawn

Please note that color will vary depending on concrete mix used. These swatches were created using a standard 60lb light gray mix. It is important to always test on a sample piece.



Warning: Colors may vary. This color chart is meant to be used as an approximation only. All of these color swatches were created using our White Countertop Mix. Using this concrete mix will yield similar colors to what you see below but a test should always be done first.

Bright White

White Countertop Mix

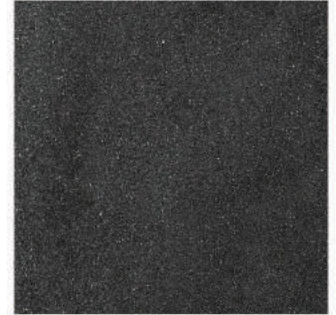
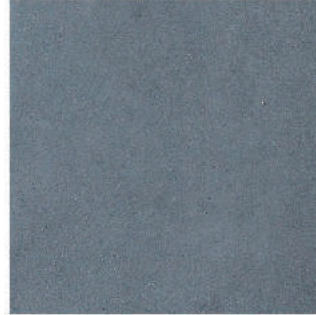
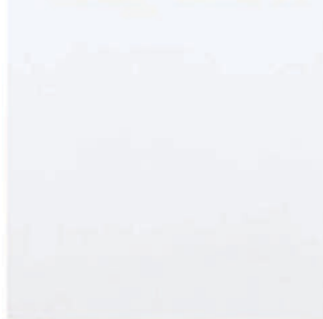
With Bright White Color-Pack

Gunmetal

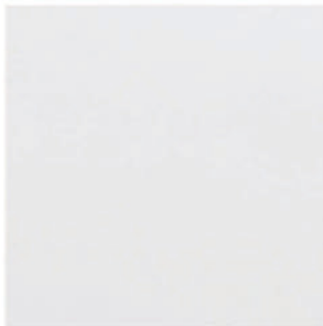
Lightly sanded - unsealed

Sealed with Aqua-Thane G40

Steel Trowel Finish



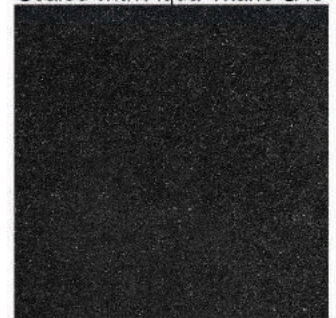
Precast on Smooth Surface



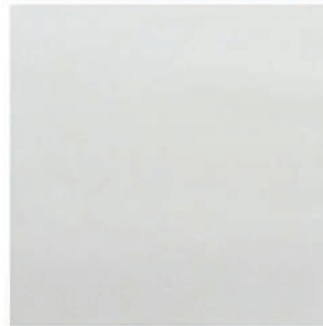
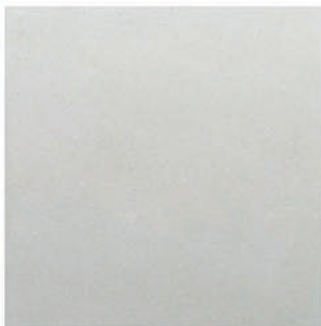
Black - NOT for outdoor use

Lightly sanded - unsealed

Sealed with Aqua-Thane G40



Grind/Polished Finish



Natural Gray Concrete

With Bright White

Steel Trowel Finish



Note: Gray concrete will vary in shade. This is an estimation only.

Z SiACRYL 14



Coverage - approx. 75 - 100 sq. ft. at 3-4 coats (1 quart).

SA-001 Z SiAcryl 14™ is an ultra high performance water based penetrating sealer formulated for use on concrete countertops. When applied and cured, Z SiAcryl 14 will repel most food and beverage products, such as lemon juice, vinegar, mustard and red wine. After application, Z SiAcryl 14 will exhibit a very natural low luster finish with very little incidental darkening. If a higher gloss finish is desired, Z Counter-Shine can be applied over Z SiAcryl 14. 100% countertop safe.

Z COUNTER-SHINE



Coverage - approx. 200 - 250 sq. ft. at 1 coat (1 quart).

CS-001 Z Counter-Shine™ adds an additional layer of gloss. It is only meant for application over the Z SiAcryl 14 or similar penetrating sealers. Z Counter-Shine can be applied in layers which will intensify the gloss with each additional application. 100% countertop safe.

AQUA-THANE M35



Coverage - approx. 50 - 75 Sq. Ft. at 2 coats

ATM-035 Z Aqua-Thane M35™ is a water-borne, two component, self cross linking polyurethane coating. It exhibits a satin finish and offers superior stain, abrasion and chemical resistance. The durability makes this sealer ideal for high-traffic areas. This sealer exhibits little to no incidental darkening. Aqua-Thane M35 is safe for indoor or outdoor use.

AQUA-THANE G40



Coverage - approx. 5 - 75 Sq. Ft. at 2 coats

ATG-040 Z Aqua-Thane G40™ is a water-borne, two component, self cross linking polyurethane coating. It exhibits a high gloss finish and offers superior stain, abrasion and chemical resistance. The durability makes this sealer ideal for high-traffic areas. This sealer will darken or enhance the color of the concrete. Z Aqua-Thane G40 is safe for indoor or outdoor use.



Z AQUA-POXY



Coverage - approx. 75 - 100 Sq. Ft. at 3 coats (2 quarts)

ZAP-001 Z Aqua-Poxy™ is a 2 part water based epoxy for concrete countertops. Z Aqua-Poxy is simple to apply and may be used as a medium gloss finish with little to no incidental darkening or as a primer coat for any number of other desired coatings such as Ultra Z Poxy. By using Z Aqua-Poxy as a primer, you will eliminate the darkening that occurs with Ultra Z Poxy. 100% countertop safe. For interior use only.

ULTRA Z POXY



Coverage - will greatly vary depending on thickness and number of coats. Please see coverage chart on website.

UZP-150 (1.5 gal kit) & **UZP-300** (3 gal kit) Ultra Z Poxy is a 100% solids, solvent free epoxy coating system for both countertops and floors. It is among the clearest and hardest epoxies on the market. It can be used over nearly any substrate including but not limited to concrete, wood, laminate and stone. Can be used as a clear coat sealer or add solid color pigments and metallic powders to create nearly any look. Not intended for outdoor use. Will darken concrete if used as a clear coat.

SOLID COLOR PIGMENT



Contains 4 fl. oz. of Solid Color Epoxy Pigment. It can treat up to 1.5 gal of Ultra Z Poxy.

Z Counterform Solid Color Epoxy Pigment is added to Ultra Z Poxy for a solid uniform base color. It can be used in a primer coat or as a top coat base color which Metallics can then be introduced to. Also, it works well to add veins in a metallic top coat to create a "fracture" that mimics natural stone. Color Chart Below. **Available in 20 different colors.**

METALLIC POWDERS



Contains 115 grams net wt. of mica powder. On average use 10 grams of Metallic Powder per quart of epoxy.

MEP-115 Z Counterform Metallic Epoxy Powder is a high quality mica powder used to add color and effects to Ultra Z poxy. This Metallic Powder can be added directly to the epoxy or can be combined with 91% isopropyl alcohol and sprayed into the wet top coat. This product is great for creating a faux stone look as it gives a 3D depth effect that can easily be used to mimic the textured look and feel of marble and granite. **Available in 40 different colors.**

***View color charts on the following 2 pages**



EPOXY PIGMENT COLOR CHART



Sand Beige UX-111-D



Citrine Yellow UX-125-C



Creme UX-164-D



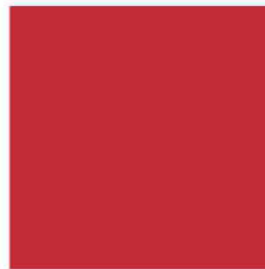
Saffron Orange UX-204-D



Rust Brown UX-715-D



Chocolate UX-714-D



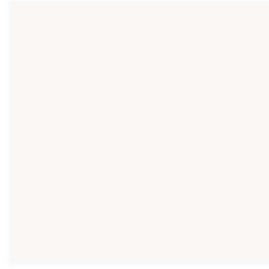
Cornell Red UX-302-D



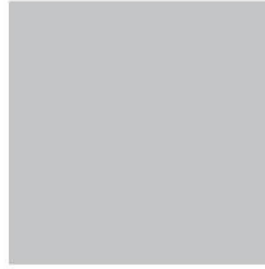
Cerulean Blue UX-512-D



Sky Blue UX-549-D



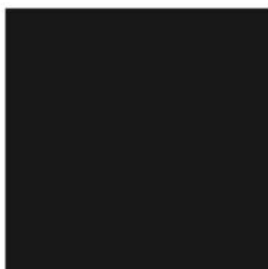
Lily White UX-803-D



Cathedral Gray UX-820-D



Battleship Gray UX-831-D



Onyx Black UX-903-CM



Golden Rod UX-100-D



Vancouver Green UX-627-C



Han Purple UX-401-D



Tile Red UX-303-D



Lime Green UX-666-D



Dark Swiss Cream UX-148-D



Burnt Orange UX-224-C

Warning: Colors may vary. This color chart is meant to be used as an approximation only.



METALLIC POWDER COLOR CHART

				
Aztec Gold	Black Pearl	Bright White	Bronze	Bronze
				
Chestnut Brown	Cobalt Blue	Copper Brown	Dark Green	Dark Purple
				
Dark Yellow	Deep Brown	Flash Bronze	Flash Cobalt Blue	Flash Silver
				
Green	Green Apple	Gray	Intense Sparkle	Iridescent Violet
				
Jungle Green	Lemon Yellow	Luster Blue	Luster Violet	Magic Yellow
				
Olive Green	Olympic Gold	Orange Yellow	Peacock Green	Red
				
Red Brown	Saffron	Satin Bronze	Silver Black	Silver Grey
				
Silver Pearl	Sky Blue	Sparkle Light Gold	True Red	Wine Red

Warning: Colors may vary. This color chart is meant to be used as an approximation only.

EPOXY TOOL BUNDLE



ETB-001 Get all of the essential tools for applying Ultra Z Poxy or any two component coating in one discounted bundle. Includes the following:

- 14" Squeegee Trowel
- 3 x Roller Cover
- 1 x Roller Handle
- 1 x Paint Tray
- 3 x Paint Tray Liners
- 1 x HS-2 Jiffy Mixing Paddle
- 3 x 5qt. Graduated Mixing Containers

14" SQUEEGEE TROWEL



ST-014 The 14" Squeegee Trowel features a soft rubber blade that is ideal for spreading epoxy or smoothing overlay coatings such as the micro-topping. The handle is threaded for use with an extension pole.

5 QT. MIXING CONTAINER



GMC-005-3 A multi-purpose mixing container ideal for mixing 2 component coatings and epoxies. Includes 3 buckets.

- 5 quarts to top line inside of the rim (~4.7 L)
- Durable plastic construction
- Solvent resistant
- Graduation marking on bucket
- Semi-clear (translucent) for easy measuring

JIFFY MIXER



Jiffy Mixer is designed to quickly and thoroughly mix dense and viscous substances in an open container. It eliminates waste and unwanted aeration of materials in addition to cutting mixing time up to 90%. It is equally effective with liquids, dry materials or multiple component materials. Made of stainless steel 304 and 100% food grade safe.

HS-2 - Designed for mixing in 1-2 gal containers. Perfect for your countertop epoxy job. It easily fits any 1/4" chucked power tool. Designed for max speeds of 1200 RPM. Tools with 450-750 RPMs get the best rate of thorough mixing.

ES - Designed for larger jobs when mixing in 2-5 gal buckets. Perfect for large countertops or epoxy floors. It easily fits any 3/8" chucked power tool. Designed for max speeds of 1000 RPM. Tools with 450-750 RPMs get the best rate of thorough mixing.



FOAM ROLLER BUNDLE



FRB-001 High-density foam rollers great for applying Ultra Z Poxy and Aqua-Thane Sealers. Bundle includes

- 3 x High-density 6" foam roller covers
- 1 x Roller Handle
- 1 x Paint Roller Tray
- 3 x Tray Liners (not pictured)

HFR-006 Replacement 6-pack of high density foam roller covers.

FINISHING TROWELS



Our Gold Stainless Steel Finishing Trowels were designed with the concrete finisher in mind. It is ideal for getting that sought after hard steel troweled finish. Gold Stainless is heat treated to fortify the steel blade so it will always stay flat and return to its original shape. The working surface on each trowel is precisely ground to give a truly "broken-in" blade ready for immediate use. The ergonomic grip was designed to keep your hand comfortable even on the largest jobs. Available in 3 sizes.

GST-165 - 16" x 5" (pictured)

GST-125 - 12" x 5"

RGT-124 - 12" x 4" rounded (pictured)

CHROME TROWEL



CFT-001 This Hard Chrome Finishing Trowel was designed for CCS by CO.ME to eliminate burn marks that can discolor White Concrete. The chrome trowel was originally used for Venetian Plaster application because of its no-burn properties which makes it the only choice when doing white countertops with our White Countertop Mix. While a traditional steel trowel can turn white concrete and plaster gray, this tool is guaranteed to prevent this.

Size: 12" x 3.75" - 4.5" tapered trapezoid design.

LEXAN FLOAT



LF-001 This concrete hand float is made from Lexan polycarbonate. This reduces the weight and prevents the metallic surface from a traditional magnesium or aluminum float from transferring color to the concrete. For this reason, this is the only float that should be used if pouring our White Countertop Mix.

Size: 11" x 4.25"



MAGNESIUM FLOAT



MF-001 This float comes broken in to give you the best results right out of the box. Once your top is flat from screeding, use a magnesium float to flatten and smooth the top while opening the pores of the fresh concrete, allowing bleed water to evaporate and air to escape. Once the concrete is firm enough and all bleed water has evaporated, use a steel trowel for your final finish.

MARGIN TROWEL



MGT-026 A Margin Trowel is ideal for placing and transporting concrete, agitating concrete near edge forms, and scraping buckets clean. This tool features high strength carbon steel for maximum durability and a comfortable soft grip handle.

Z COUNTER-SCREED 28"



ZCS-228 This custom design by Concrete Countertop Solutions is the perfect screed for 24" countertops. The extra knob handle located near the end allows the user to keep the screed riding on the backwall form to ensure a flat top. The magnesium screeding surface is ideal for pulling cream to the top of the concrete to ensure a smooth finish.

Z ISLAND-SCREED 40"



ZIS-240 This custom design by Concrete Countertop Solutions is the perfect screed for wider countertops such as islands up to 40". The magnesium surface is ideal for screeding concrete. Screed for hours with comfortable soft grip handles.



APPLICATOR PADS



This micro-fiber applicator pad is perfect for applying many different concrete sealers including, but not limited to, the SiAcryl 14, Counter-Shine, Aqua-Poxy and the Ultra Z Poxy.

APD-001 includes one pad and the handle.

APD-002 includes two replacement pads.

VIBRA-BLADE



VB-001 Vibra-Blade is the ultimate tool for vibrating concrete. Use along the edge forms to remove nearly all trapped air which causes unwanted “bug holes” in the countertop edge. This tool attaches to nearly all brands of Multi-Purpose Oscillating Tools. Note: It will not work with Dremel Quick-Change system. Tool Sold Separately.

WET POLISHER



WP-001 High quality wet polisher used for grinding and polishing concrete.

Features

- 900 Watt motor
- 800-4000 RPM variable speed
- water flow adjustment
- spindle lock
- 5” maximum polishing pads
- ground fault circuit interrupter

Includes

- 4” velcro backer pad
- water supply line with hose adapter
- water shroud
- shaft wrench and Allen wrench
- 2 replacement brushes for motor

BACKER PAD



BP-004 4” Rubber Backer Pad with hook and loop to attach Diamond Polishing Pads to a Grinder or Wet Polisher.

Size: 4” pad

Attachment: Arbor 5/8” 11



Photo Contest 6 submission by Jordan Thompson

SINGLE PADDLE MIXER



High quality, professional grade single paddle power mixer great for mixing concrete, mortar, grout, plaster, etc.

- Powerful 1800W Motor
- Dual gear box - Gear 1: 450RPM, Gear 2: 790 RPM
- Variable speed control
- Double handle with ergonomic grip
- Double insulated motor housing
- Heavy-duty 14 AWG grounded cord.

DOUBLE PADDLE MIXER



High quality, professional grade double paddle power mixer great for mixing concrete, mortar, grout, plaster, etc. The paddles spin in opposite directions creating a vortex for the quickest and most thorough mixing. This also helps eliminate the “spinning bucket” issue.

- Powerful 1800W Motor
- Dual gear box - Gear 1: 450RPM, Gear 2: 790 RPM
- Variable speed control
- Double handle with ergonomic grip
- Double insulated motor housing
- Heavy-duty 14 AWG grounded cord.



FLOATING BRACKET V2



BRK-V2 Heavy-duty, brushed stainless steel mounting bracket to hold raised floating countertops and bartops. These raised bar supports will provide a 6" lift if mounted flush with the top of the cabinet box. The raised countertop or bartop may be made from concrete, glass, stone, or any other countertop material. These two part brackets use a back mounting plate to eliminate relying on screws holding in your cabinet box. This greatly increases the holding power of these brackets and reduces the risk of damage to the cabinet.

FLOATING BRACKET V6



BRK-V6 Heavy-duty, brushed stainless steel mounting bracket to hold raised floating countertops and bartops. These raised bar supports will provide a 6" lift if mounted flush with the top of the cabinet box. The raised countertop or bartop may be made from concrete, glass, stone, or any other countertop material. These two part brackets use a back mounting plate to eliminate relying on screws holding in your cabinet box. This greatly increases the holding power of these brackets and reduces the risk of damage to the cabinet.



V6 Brackets pictured holding up raised glass breakfast bar.

SUBWAY TILEFORM



TF-001 Make your own concrete wall tile with the Z Tileform System. Pouring your own concrete tile will give you the creative freedom to make a truly custom tile backsplash while saving a fortune over conventional ceramic and stone tile. It is as easy as mixing our White Countertop Concrete and pouring it into the Z Tileform molds. Add pigment and experiment with different techniques to create something truly beautiful.

Includes: 12 Subway Tileform trays (72 tiles - 9 sq. ft. per pour) - Molds are reusable

Dimensions: 6" W x 3" H x 5/16" D

PENCIL TILEFORM

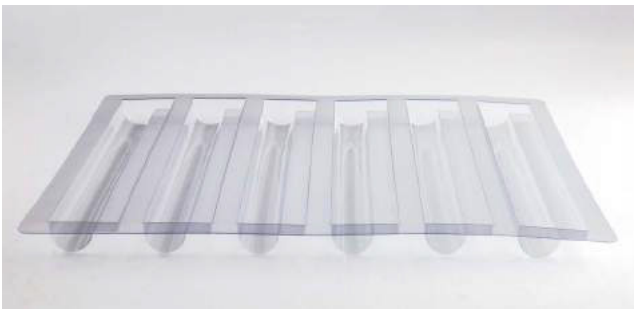


TF-002 Make your own concrete wall tile with the Z Tileform System. Pouring your own concrete tile will give you the creative freedom to make a truly custom tile backsplash while saving a fortune over conventional ceramic and stone tile. It is as easy as mixing our White Countertop Concrete and pouring it into the Z Tileform molds. Add pigment and experiment with different techniques to create something truly beautiful.

Includes: 6 Pencil Tileform trays (36 tiles - 36 linear ft. per pour) - Molds are reusable

Dimensions: 12" W x 3/4" H x 5/8" D

CHAIR RAIL TILEFORM



TF-003 Make your own concrete wall tile with the Z Tileform System. Pouring your own concrete tile will give you the creative freedom to make a truly custom tile backsplash while saving a fortune over conventional ceramic and stone tile. It is as easy as mixing our White Countertop Concrete and pouring it into the Z Tileform molds. Add pigment and experiment with different techniques to create something truly beautiful.

Includes: 6 Chair Rail Tileform trays (36 tiles - 36 linear ft. per pour) - Molds are reusable

Dimensions: 12" W x 2" H x 1" D



Subway

Chair Rail

Pencil



Backsplsh tile sample created with Tileform Molds



GEM PAD



DPK-001 This kit includes three diamond pads, #60, #150, #300 and one foam block. The only flexible Diamond hand pad on the market. This will allow the pad to conform to curved surfaces ensuring even sanding. Should be used to sand concrete off profile forms before snapping away form.

DIAMOND-DISCS



Diamond sanding pads that will attach to just about any 5" - 8 hole random orbital sander. Lasts longer and cuts better than any other "sand paper" on the market. These are electro-plated diamond pads (not diamonds in resin) so they do not require the high RPMs like most diamond polishing pads. Great for light to medium aggregate exposures, smoothing out moderate imperfections and trowel marks and for removing most topical sealers/ coatings.

DD-060 60 Grit Pad

DD-120 120 Grit Pad

DD-200 200 Grit Pad

*Available individually or in 3 pack.

DRY POLISHING PADS



DPP-003 High quality 3 step 4" dry polishing pads with hook and loop backing. Will attach to 4" Velcro backer pad. Can be used on a stone polisher or variable speed grinder. Ideal for jobs where a wet polish is not possible. By using a dust collection shroud on your grinder, almost all of the mess associated with polishing can be eliminated. For a deep grind to expose larger aggregate, start with a diamond cup wheel.

RPM: 2000 - 5000 (around 4000 recommended).

DIAMOND POLISHING PADS



DPP-001 4" diamond wet polishing pads for use with wet polisher. These high quality diamond pads will expose aggregate in the concrete and polish the surface up to 3000 grit!

- 50 grit
- 100 grit
- 200 grit
- 400 grit
- 800 grit
- 1500 grit
- 3000 grit

RPM: Should be used between 2000-4000.

WET SAND PAPER



Z Counterform Wet Sand Paper is great for sanding thick concrete coatings such as epoxy. It can be used to remove minor imperfections or dull the high gloss coating and give more of a matte finish. If doing a faux stone epoxy countertop, the wet sand paper is great for making the epoxy look exactly like honed stone. Each pack contains 10 - 5" sanding discs.

- **WSP-001-400** - 400 grit
- **WSP-001-600** - 600 grit
- **WSP-001-800** - 800 grit
- **WSP-001-1000** - 1000 grit
- **WSP-001-1200** - 1200 grit
- **WSP-001-2000** - 2000 grit

HAND SANDING MOUSE



HSM-005 The Hand Sanding Mouse is a foam block with hook and loop attachment for any 5" sand paper discs. Good for use with wet and dry sand paper of any grit. The mouse shape allows for a comfortable ergonomic grip. Great for use with our Wet Sand Paper or the Grit-Discs.

Z GRIT-DISCS



Commercial grade silicon carbide sand paper. Will fit all 5" - 8 Hole hook and loop orbital sanders. Can be used for concrete, marble, limestone, travertine, and other hard stone surfaces. Includes 10 pieces of sand paper.

- **GD-001-60** - 60 grit
- **GD-001-80** - 80 grit
- **GD-001-120** - 120 grit
- **GD-001-220** - 220 grit
- **GD-001-320** - 320 grit
- **GD-001-400** - 400 grit

Available individually or in a 60 pack that contains 10 of each grit.





STONE FORM LINER (THIN)



Reusable, 8 foot form liner. 2-1/4" tall made to fit perfectly inside of Z-Counterform Square Edge Form. Will give your countertop a chiseled stone edge look. Ends are tapered to allow overlapping.

SFL-001 2-1/4" tall for use with standard Square Edge.

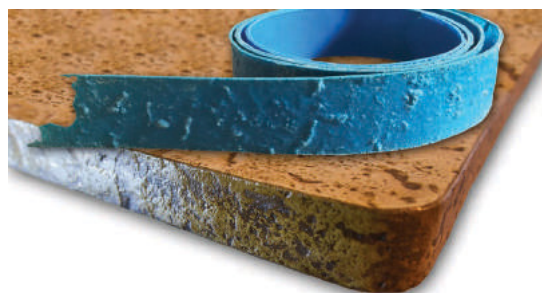
SLATE FORM LINER (THIN)



Reusable, 8 foot form liner. 2-1/4" tall made to fit perfectly inside of Z-Counterform Square Edge Form. Will give your countertop a slate edge look. Ends are tapered to allow overlapping.

SFL-002 2-1/4" tall for use with standard Square Edge.
ESFL-002 1-1/4" tall for use with Euro Square Edge.

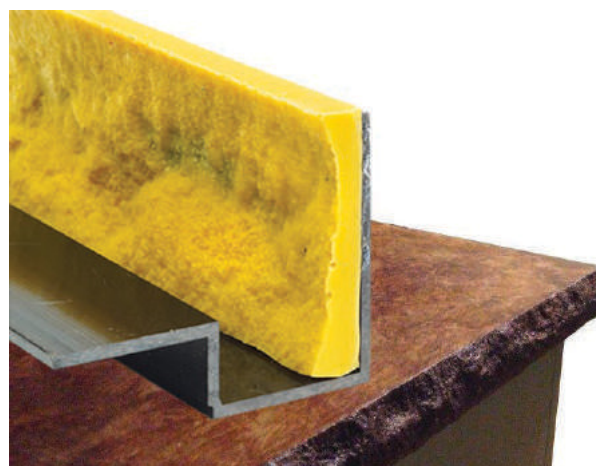
TRAVERTINE FORM LINER



Reusable, 8 foot form liner. 2-1/4" tall made to fit perfectly inside of Z-Counterform Square Edge Form. Will give your countertop a porous travertine edge look. Ends are tapered to allow overlapping.

TFL-001 2-1/4" tall for use with standard Square Edge.

ROCKFACE FORM LINER



Reusable, 8 foot form liner. 2-1/4" made to fit perfectly inside of Z-Counterform Square Edge Form. Gives your countertop a realistic, chiseled stone edge.

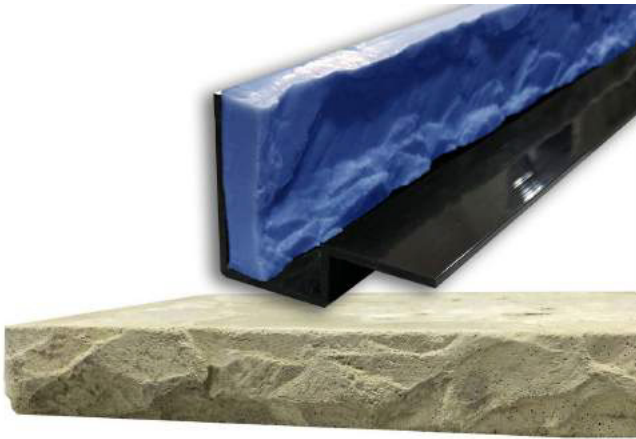
RFL-001 2-1/4" tall for use with standard Square Edge.
CRFL-001 3-1/2" tall for use with Commercial Form.
EFL-001 1-1/4" tall for use with Euro Square Edge.

Z RELEASE



ZR-001 Z Release™ is a specially formulated colorless anti-adhesive designed to prevent new concrete from adhering to texture mats. Z Release can be used in all areas and requires no clean up.

HEAVY CHISELED SLATE



Reusable, 8 foot concrete form liner. 2-1/4" tall made to fit perfectly inside of Z-Counterform Square Edge Form. Gives a realistic, rustic slate edge to your countertop.

CSL-001 2-1/4" tall for use with standard Square Edge.
CCSL-001 3-1/2" tall for use with Commercial Form.

WOODGRAIN FORM LINER



Reusable, 7 foot concrete form liner made to fit perfectly inside of Z Counterforms. Gives a realistic, wood grain edge to your counter. Made from the same high quality, long lasting polyurethane rubber as our Concrete Stamps and Poolform Liners..

WFL-001 2-1/4" tall for use with standard Square Edge.
CWFL-001 3-1/2" tall for use with Commercial Form.
EWFL-001 1-1/4" tall for use with Euro Square Edge.

STONE TEXTURE MAT



STM-001 Includes 2 - 20" X 20" stone texture mats. Used to stamp concrete surface to mimic the texture of a stone countertop. Use with Stone Form Liner (SFL001) on the front edge for complete uniform stone look.

SLATE TEXTURE MAT



STM-002 Includes 2 - 20" X 20" slate texture mats. Used to stamp concrete surface to mimic the texture of a slate countertop. Use with Slate Form Liner (SFL002) on the front edge for complete uniform slate look.

WOODGRAIN TEXTURE MAT



WTM-003 Includes 3 - approximately 72" x 7" texture skins. Use these texture skins to give your concrete the look of a weathered woodgrain plank. For a matching woodgrain edge, use the Woodgrain Form Liners.



SINKS, FAUCETS, DRAINS AND MORE

Concrete Countertop Solutions sells only top quality sinks made from the highest industry standard materials. Our stainless steel sinks are 304 grade, cold rolled, 16 gauge steel. All of our sinks and faucets are guaranteed to be comparable in quality to similar, higher priced models from name brand companies such as Kohler, Elkay or Blanco. So how can we sell them at such an affordable price? We have partnered directly with the manufacturer to cut out the industry high mark-ups.

Some of our most popular items are below. Please visit our website to see the full product line...



KS-502A - Double Bowl Stainless Steel
 • 304 Grade, Cold Rolled, 16 Gauge
 • Limited Lifetime Warranty



KS-3322S - Rectangular Stainless Steel
 • 304 Grade, Cold Rolled, 16 Gauge
 • Limited Lifetime Warranty



KS-766 Spring-Sprout Faucet
 • Limited Lifetime Warranty



KS-914 - Apron Front Copper Sink
 • 99% pure mined copper
 • Limited Lifetime Warranty



KS-405 - Apron Front Stainless Steel
 • 304 Grade, Cold Rolled, 16 Gauge
 • Limited Lifetime Warranty



KS-601 - Glass Vessel Sink
 • Available in many colors
 • Limited Lifetime Warranty



KS-708 - Single Handle Pull Out Faucet
 • Limited Lifetime Warranty



KS-3118 - Single Bowl Stainless Steel
 • 304 Grade, Cold Rolled, 16 Gauge
 • Limited Lifetime Warranty



POOLFORM™

CONCRETE COUNTERTOP SOLUTIONS

105 Life Science Dr. Scott Township, PA 18447

(570) 587-3799

Photo: Steve Wagner, Aquatic Design, Inc.

CONCRETECOUNTERTOPSOLUTIONS.COM
info@concretecountertopsolutions.com